




# Manway Gasket Installation Instructions for Sahara Air Products Regenerative Air Dryers

**SAHARA AIR PRODUCTS**  
A Div. of HENDERSON ENGINEERING COMPANY, INC.  
95 North Main Street • Sandwich IL 60548  
815-786-9471 • 800-544-4379 • Fax: 815-786-6117  
[www.saharahenderson.com](http://www.saharahenderson.com)

## Service Guide

-  Before servicing equipment, it is important and advised to read and understand all instructions and procedures in this Service Guide, as well as those in the air dryer instruction manual. They provide information that can help prevent serious injury, damage to components, or both.
- Read and observe all warnings and cautions in this Service Guide, as well as those in the air dryer instruction manual which was included with the air dryer upon shipment. They provide information that can help prevent serious injury, damage to components, or both.
- Follow your company's maintenance, service, installation, and diagnostics guidelines.
- Use proper tools to help avoid serious personal injury and damage to components.

*These instructions apply to the following Sahara Regenerative Air Dryers:*

**Blower Purge (BP)**

**Closed System (CS)**

**Exhaust Purge (EP)**

**Heat-of-Compression  
(HC & SP)**

**Heatless (T & HL)**

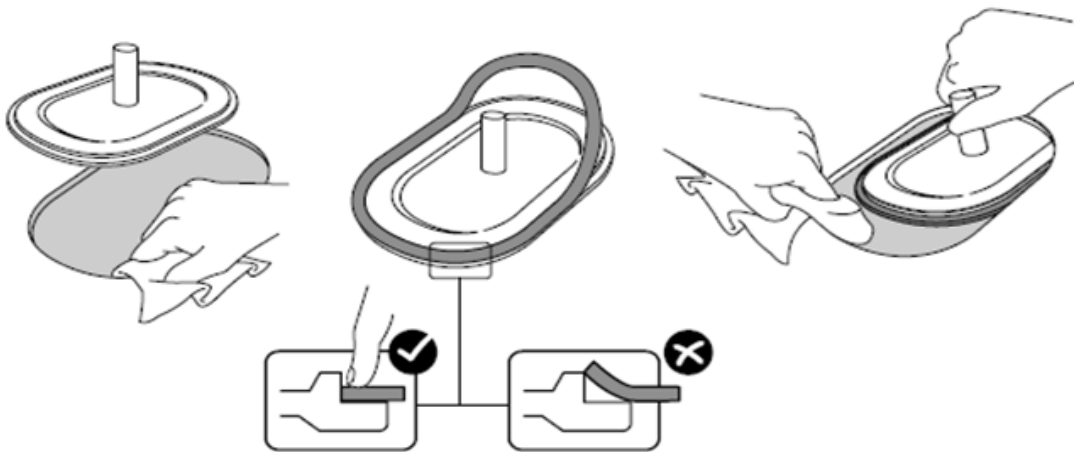
# SAHARA AIR PRODUCTS

## SERVICE GUIDE

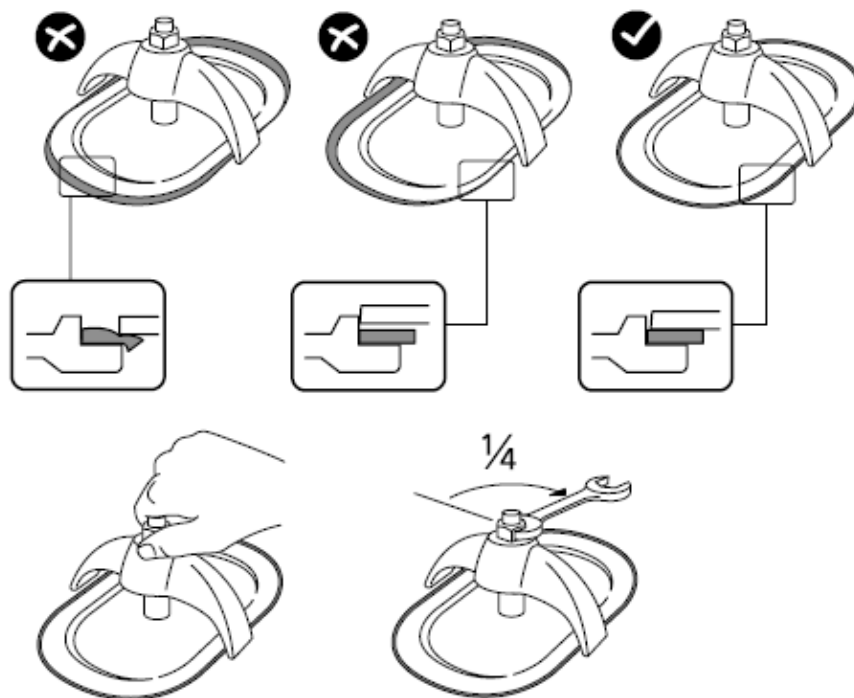
### Instructions for Manway Gasket Installation

#### MANWAY GASKET INSTALLATION

1. Remove old manway gasket and thoroughly clean the surface on the vessel and on cover plate. Place new manway gasket on the inspection cover plate and make sure the gasket is pushed down tight on the plate. Do not use any grease, lubricant, or adhesive. When the cover plate is in the vessel and the manway gasket is in place, make one last cleaning swipe using a rag wrapped around your finger to ensure the mating surface is clean.



2. Set crab, then center plate in opening and tighten nut enough to give a snug fit. Make it hand tight, then increase pressure on the gasket with a quarter turn of the wrench.



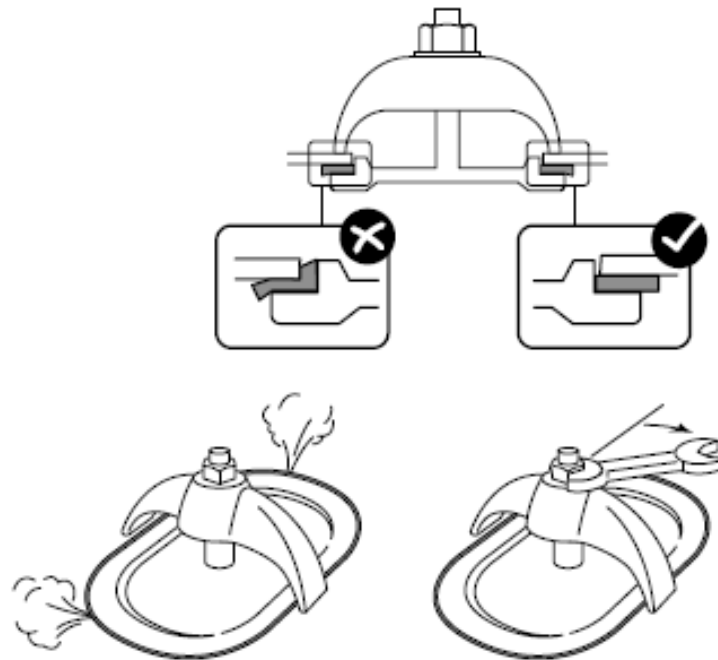
# SAHARA AIR PRODUCTS

## SERVICE GUIDE

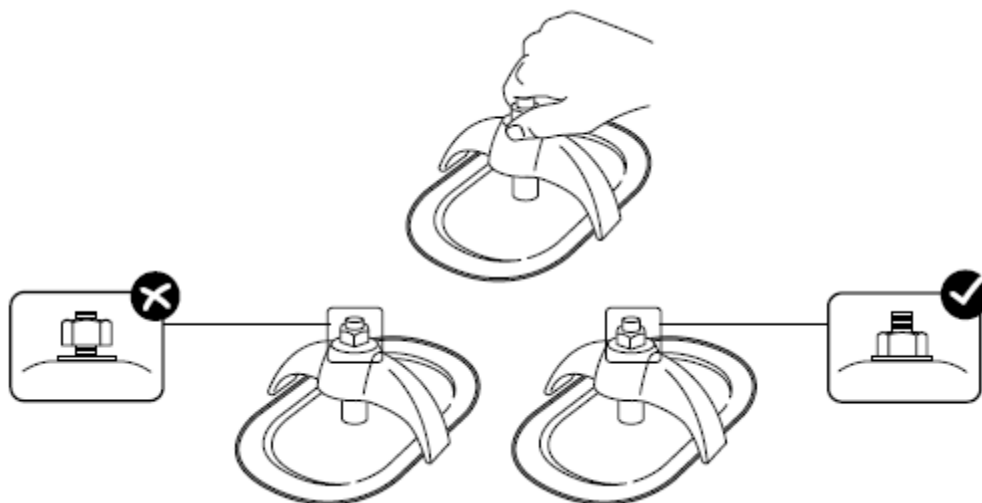
### Instructions for Manway Gasket Installation

#### GASKET INSTALLATION

- 3. Do not over-tighten, as it will over-compress the gasket and shorten its service life. If gasket leaks while pressure is being built up, tighten only enough to stop leakage.



- 4. As pressure builds up to operating level in the vessel, the nut and crab will loosen as it typically takes several days for the gasket to reach its ultimate compression. It is important to keep the nut at least finger tight until it no longer loosens. Nut and crab should be re-tightened after multiple dryer cycles to account for pressure changes.



- 5. Never re-use a manway gasket!

**SAHARA AIR PRODUCTS**  
**SERVICE GUIDE**  
**Instructions for Manway Gasket Installation**

**FIELD & TECHNICAL SUPPORT**

<b>Service Manager</b> Bryan Scott	Office: 815-786-9471 Ext. 129 Cell: 630-697-3608 Fax: 815-786-6117 E-mail: BryanScott@saharahenderson.com
<b>Service Engineer</b> Andres Perdomo	Office: 815-786-9471 Ext. 127 Fax: 815-786-6117 E-mail: AndresPerdomo@saharahenderson.com

**INSIDE SALES FOR PARTS**

<b>Inside Parts Sales</b> Mimoza Jaisi	Phone: 815-786-9471 Ext. 134 Fax: 815-786-6117 E-mail: Sales@saharahenderson.com
---	--

When contacting Henderson Engineering, please have the following information available:

- **Serial Number** which can be found on the air dryer; either on the ASME code nameplate on the dryer towers or in the electrical enclosure.
- **Model Number** which can be found on the air dryer; either on the ASME code nameplate on the dryer towers or in the electrical enclosure.
- Inlet air temperature and pressure.
- Actual inlet flow rate.



**Henderson Engineering Co., Inc.,**  
**is proud to be certified to the**  
**ISO 9001 Quality Management System**  
**standards and guidelines.**

**Sahara Air Products, Div. of Henderson Engineering Co., Inc.**

[www.saharahenderson.com](http://www.saharahenderson.com)

Phone: 815-786-9471 • Fax: 815-786-6117

Business Office Hours: Monday - Friday 8:00 a.m. - 4:30 p.m.  
Receiving Dock Hours: Monday - Thursday 7:30 a.m. - 3:30 p.m.

Copyright © 2023 Henderson Engineering Co., Inc. All rights reserved.

*Information contained in this Service Guide was in effect at the time of publication and is subject to change without notice or liability. Henderson Engineering Co., Inc., reserves the right to revise the information presented herein at any time.*